

The image shows a close-up of a book cover with a traditional marbled paper design. The pattern is a complex, organic swirl of colors, primarily a dark brown or chocolate hue, with intricate veins and blotches of a vibrant red and a shimmering gold or yellow. The overall effect is reminiscent of natural stone or biological tissue. In the bottom-left corner, a small, rectangular white paper label is affixed to the cover. The label is partially cut off on the left side, but the word "MUSEUM" is clearly visible in a simple, black, sans-serif font. The background behind the book is a solid, dark color, likely black, which makes the marbled pattern stand out.

MUSEUM

Skizzenbuch von Nathanael Meldior
Solingen, 1816 (hs. Eintrag auf dem
Umschlag am 30. Brief)

MB 21

MB
21

Furum Mangel-oll fufgen. 1 stücken bey den Gärtnern



MB
21

*Kath. Helphers in Tölingen
18. Februar*

MB
21

Jan. No. 05, 1771.



Großhändler von Gärten & Melehiors
in Solingen.

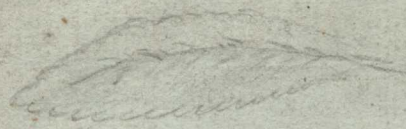
MB 21

Handwritten text, likely bleed-through from the reverse side of the page, appearing as mirrored cursive script.

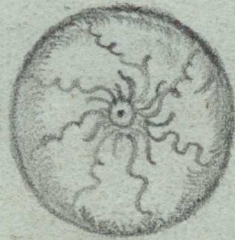
Vertical handwritten text on the left side of the page, possibly a list or address, including names like 'Julia Wampff' and 'Herr Wampff'.

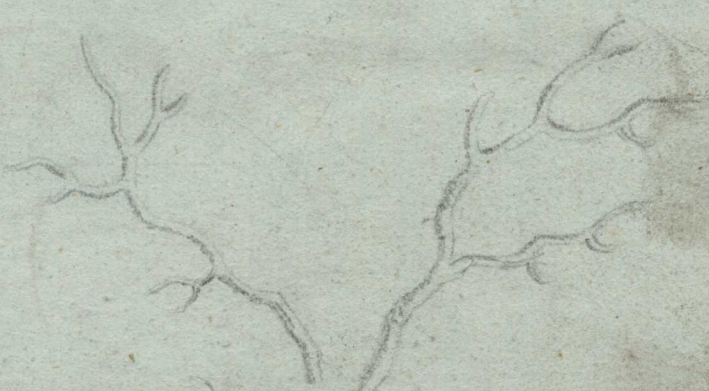
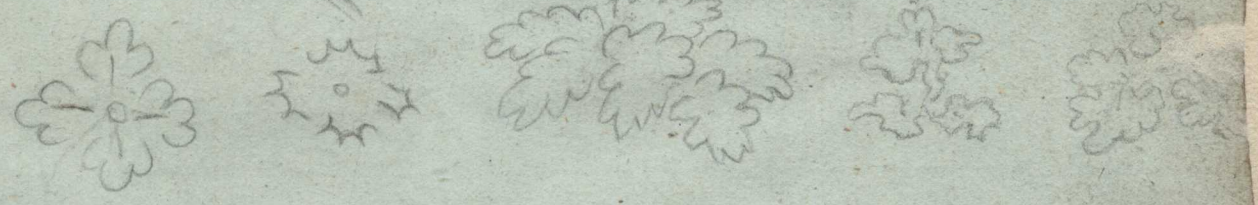
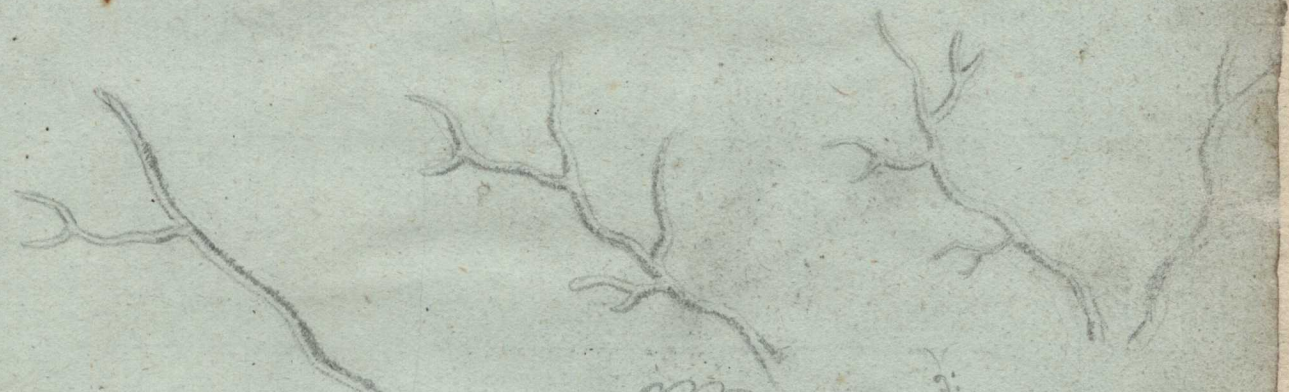






4



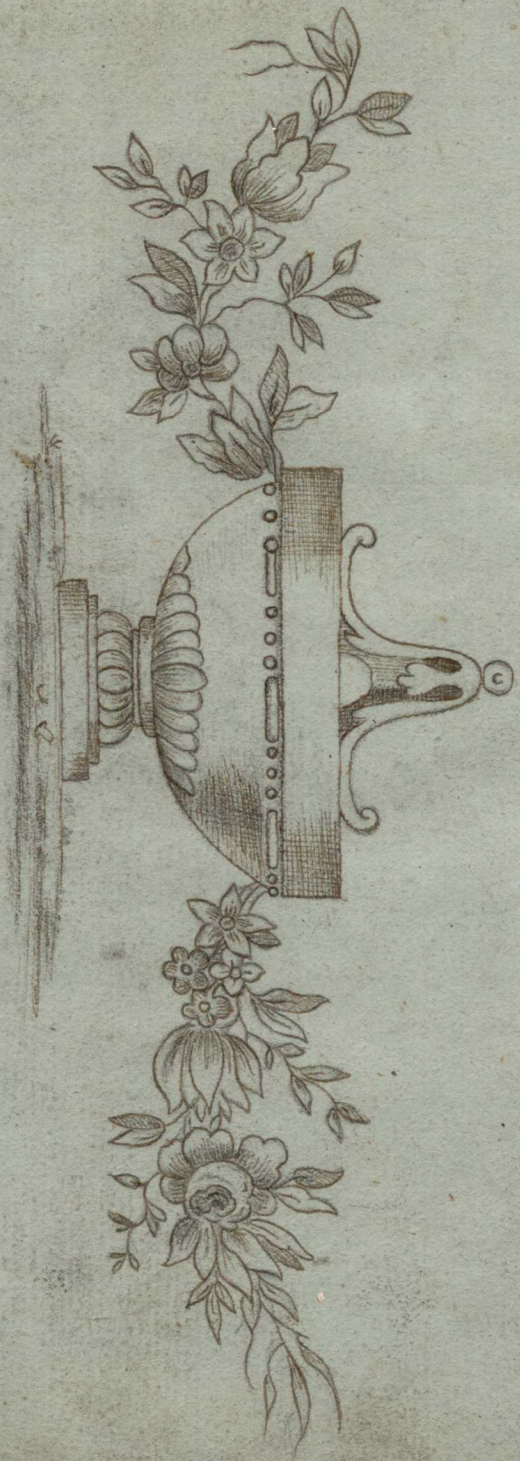


6





8





10



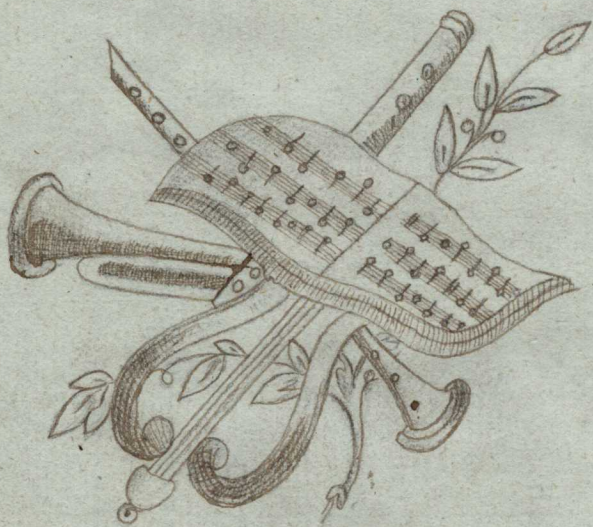


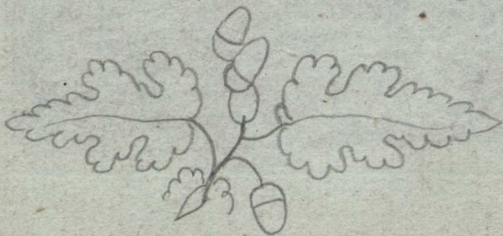
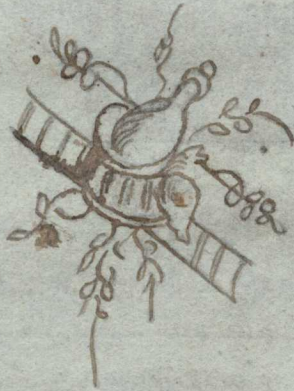
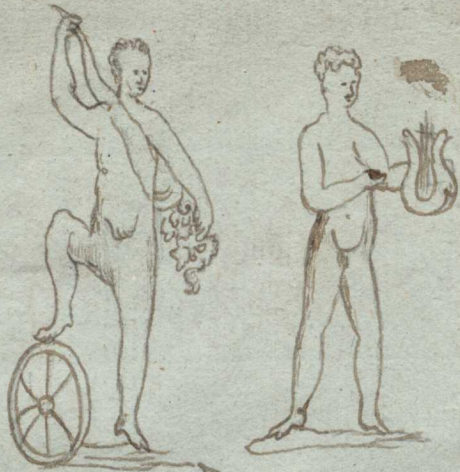
12



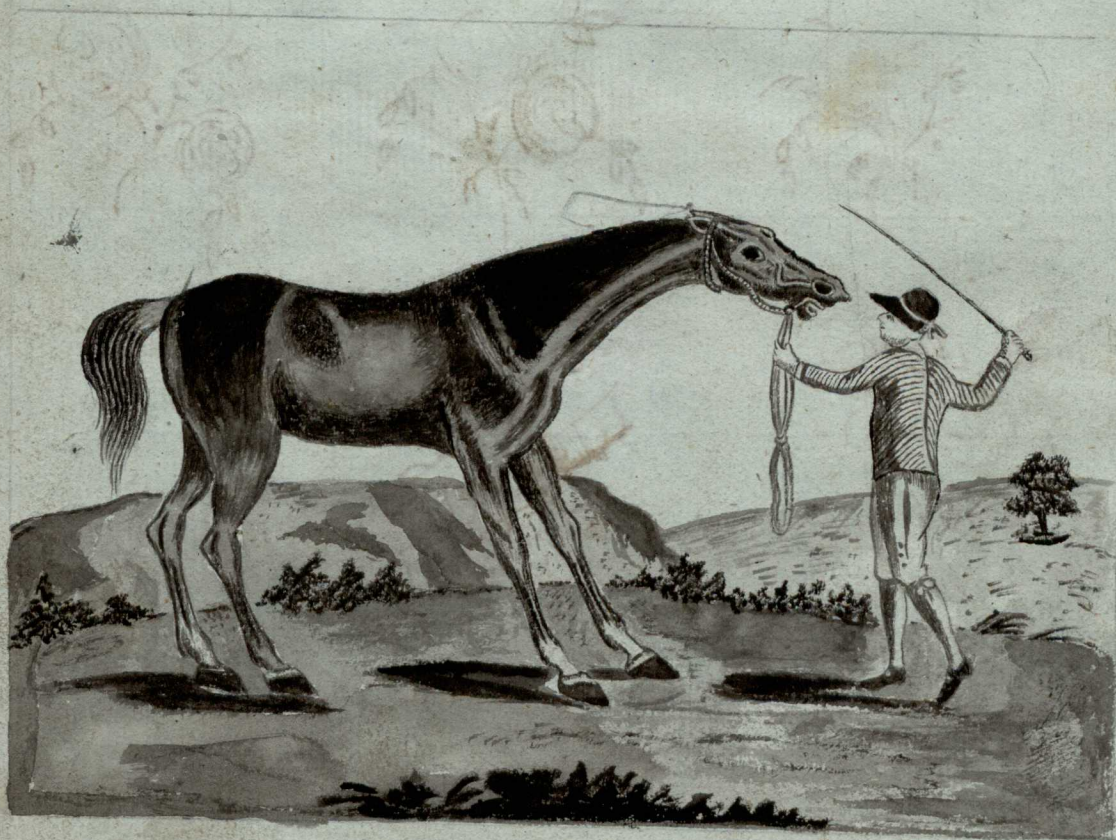
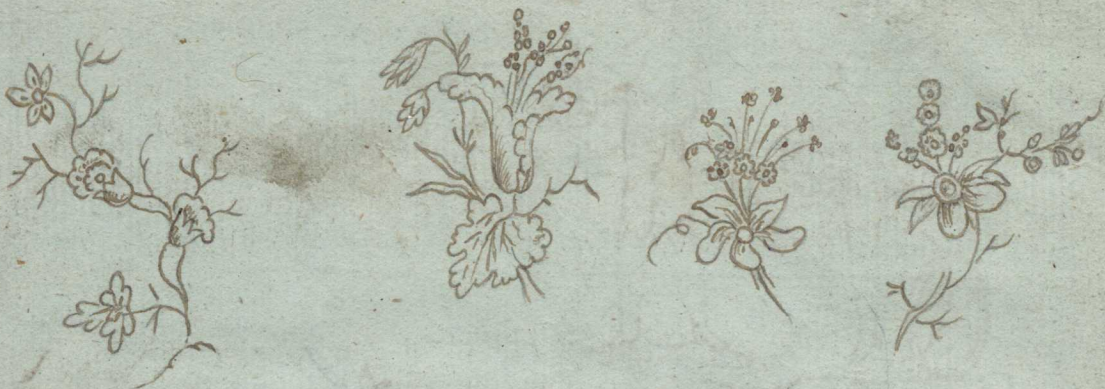


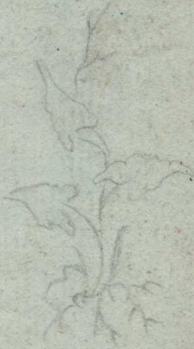
14





16





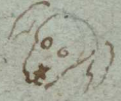
18



19



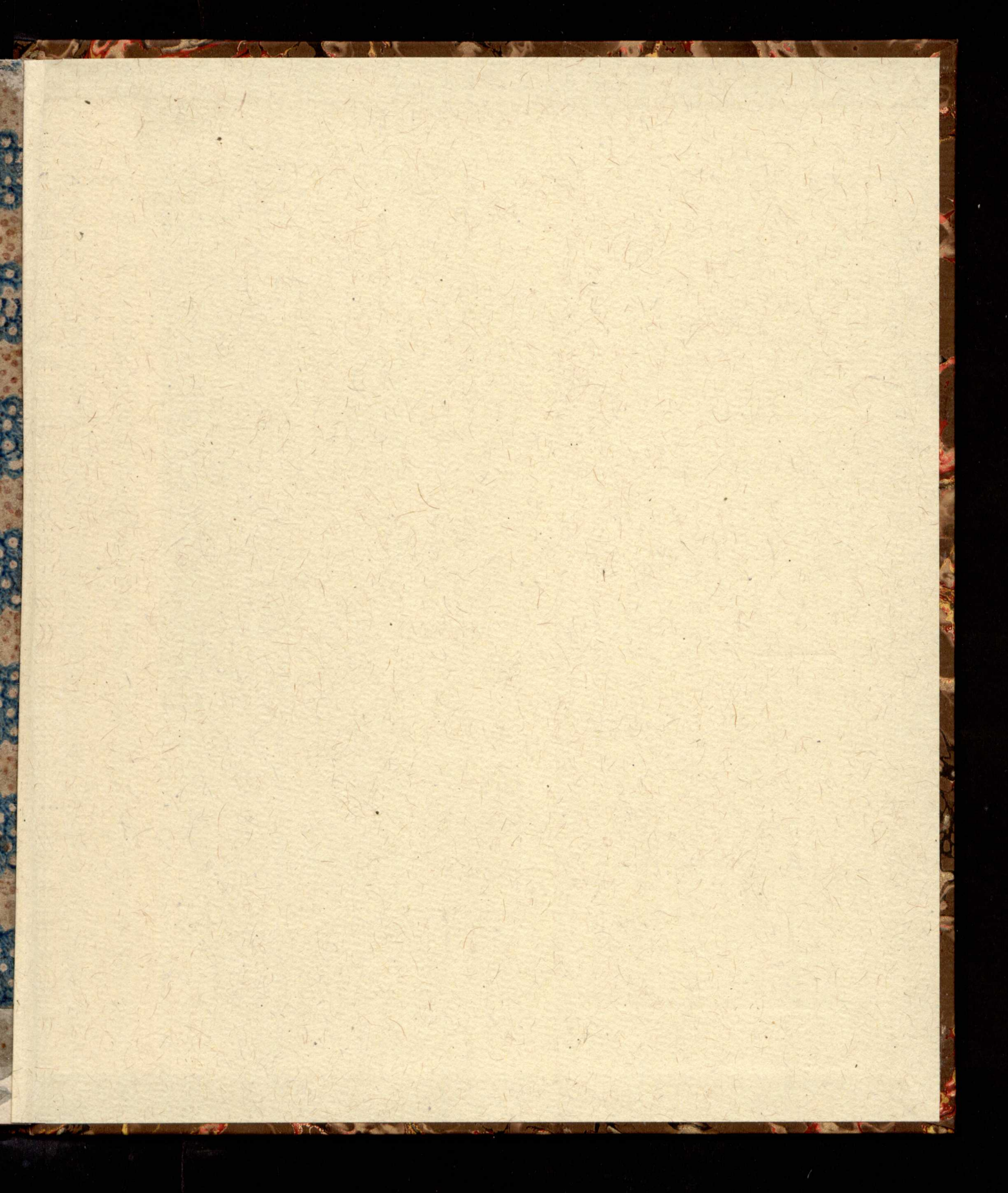
20




Manuscript of the ...
Cyrus ...



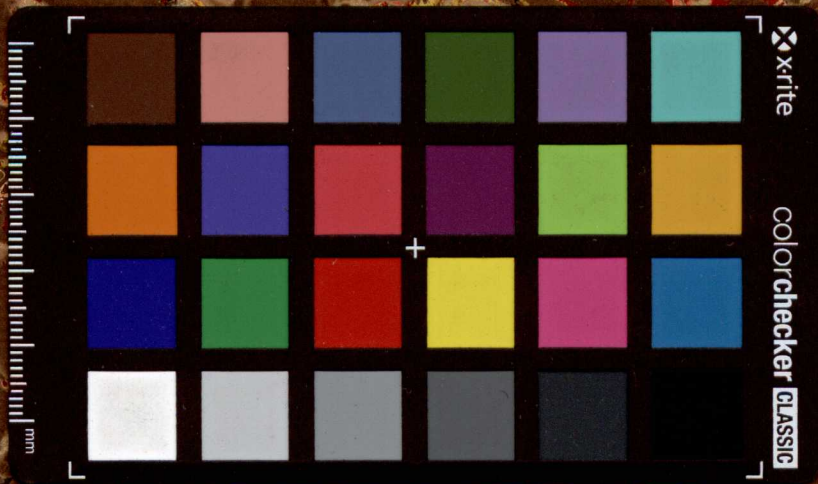
See ...
London, November 1815.





DEUTSCHES KLINGE

MB 2



DEUTSCHES KLINGE

MB 2