

GENMUSEUM

B
3

Proc. 1912, 75.



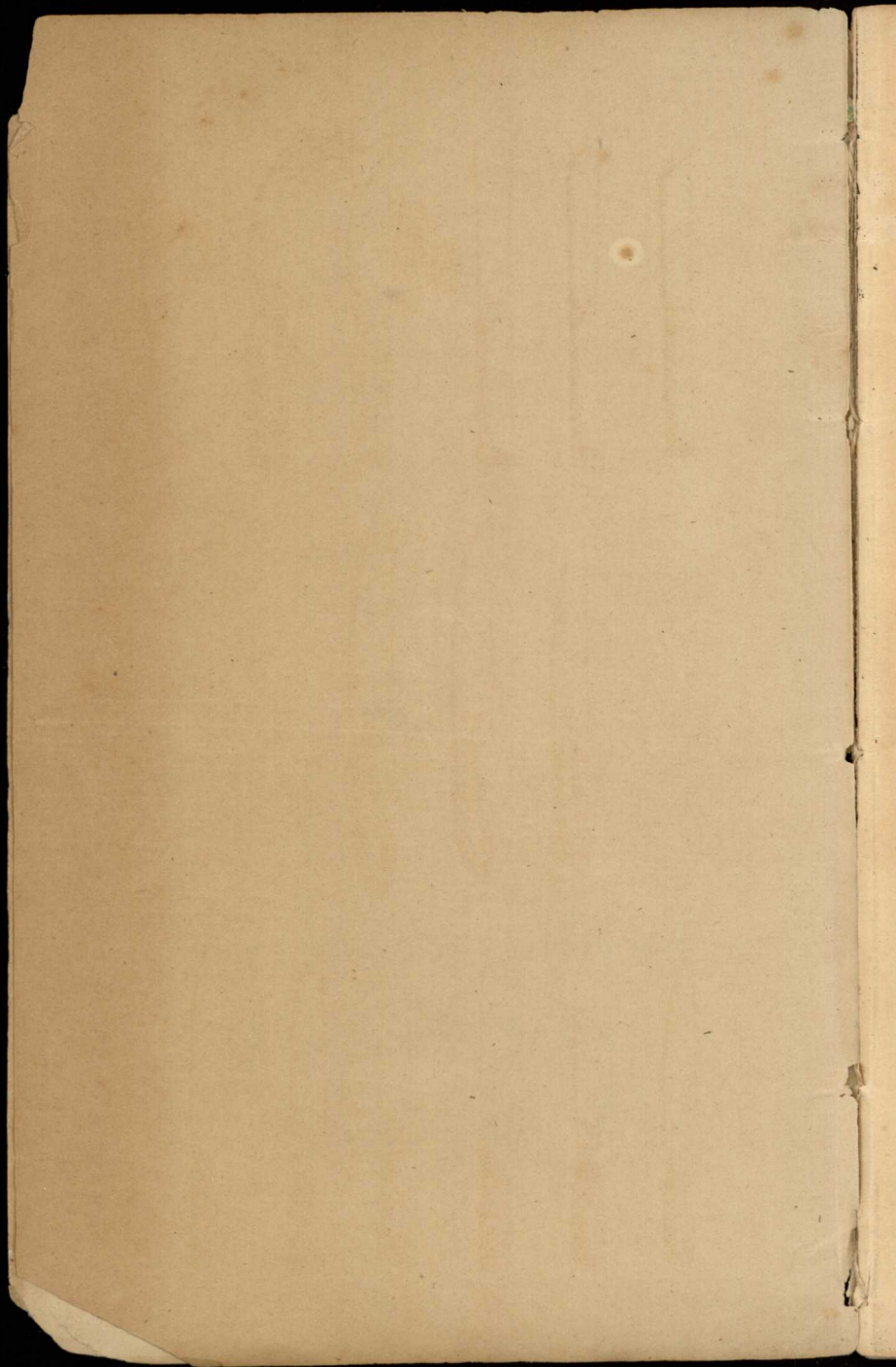
DEUTSCHES KLINGENMUSEUM

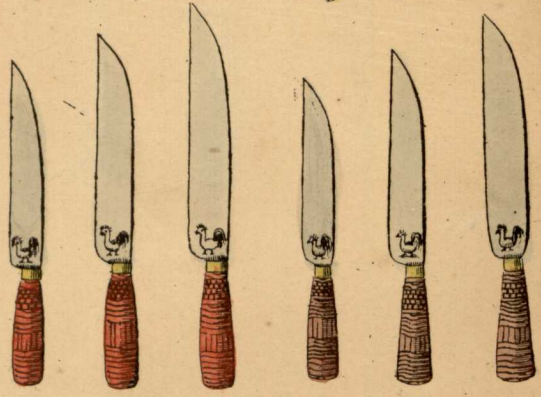
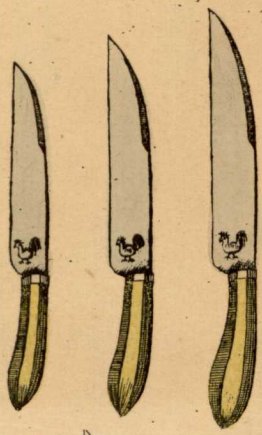
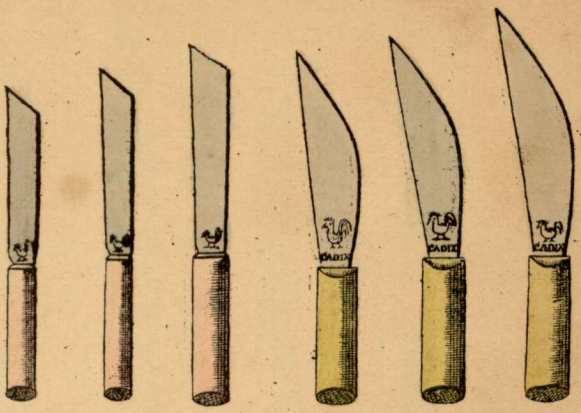
MB
43

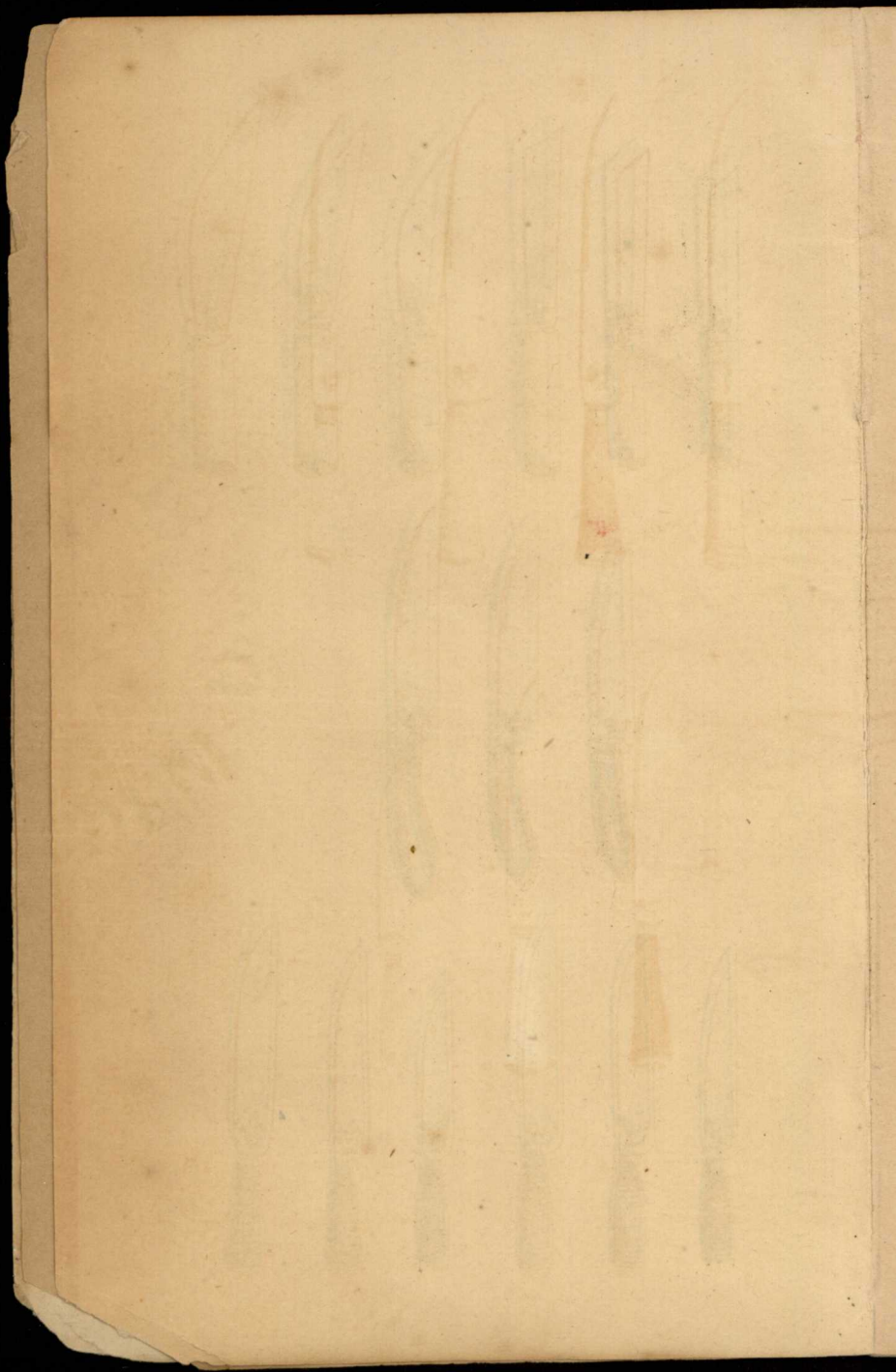
Gepunktet von Johann
Albert Weyersberg
1. Dez. 1911.

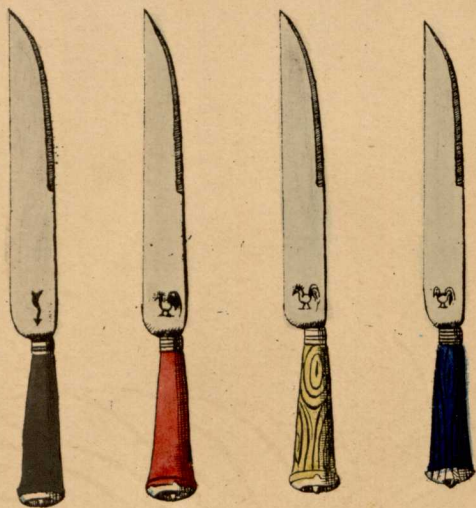
Dreis. Courant. Abbildungen
von Johann Weyersberg in Spitzbergen (1840/50)

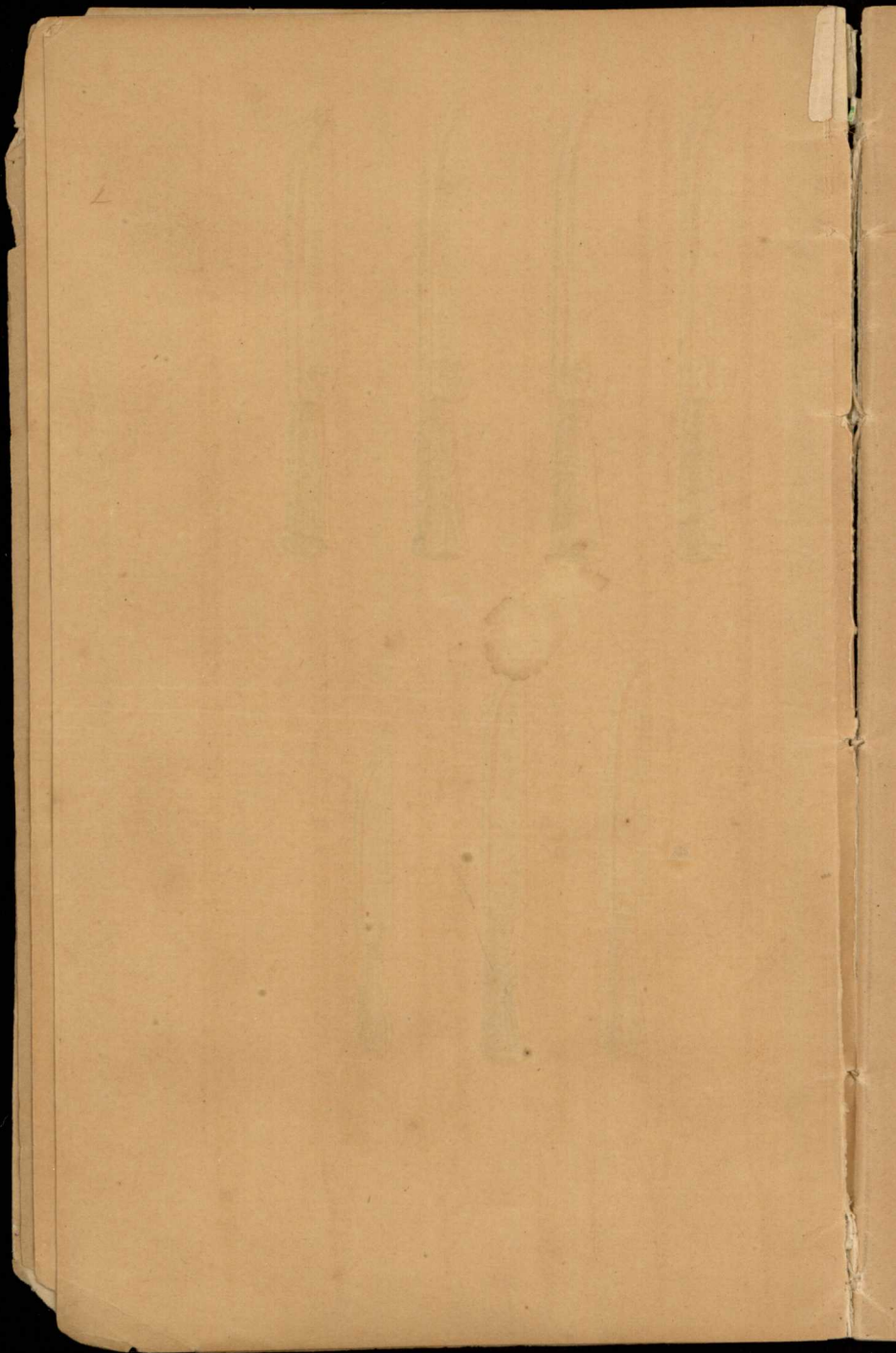
aus dem Nachlass von Ambergmeister G. Weyersberg

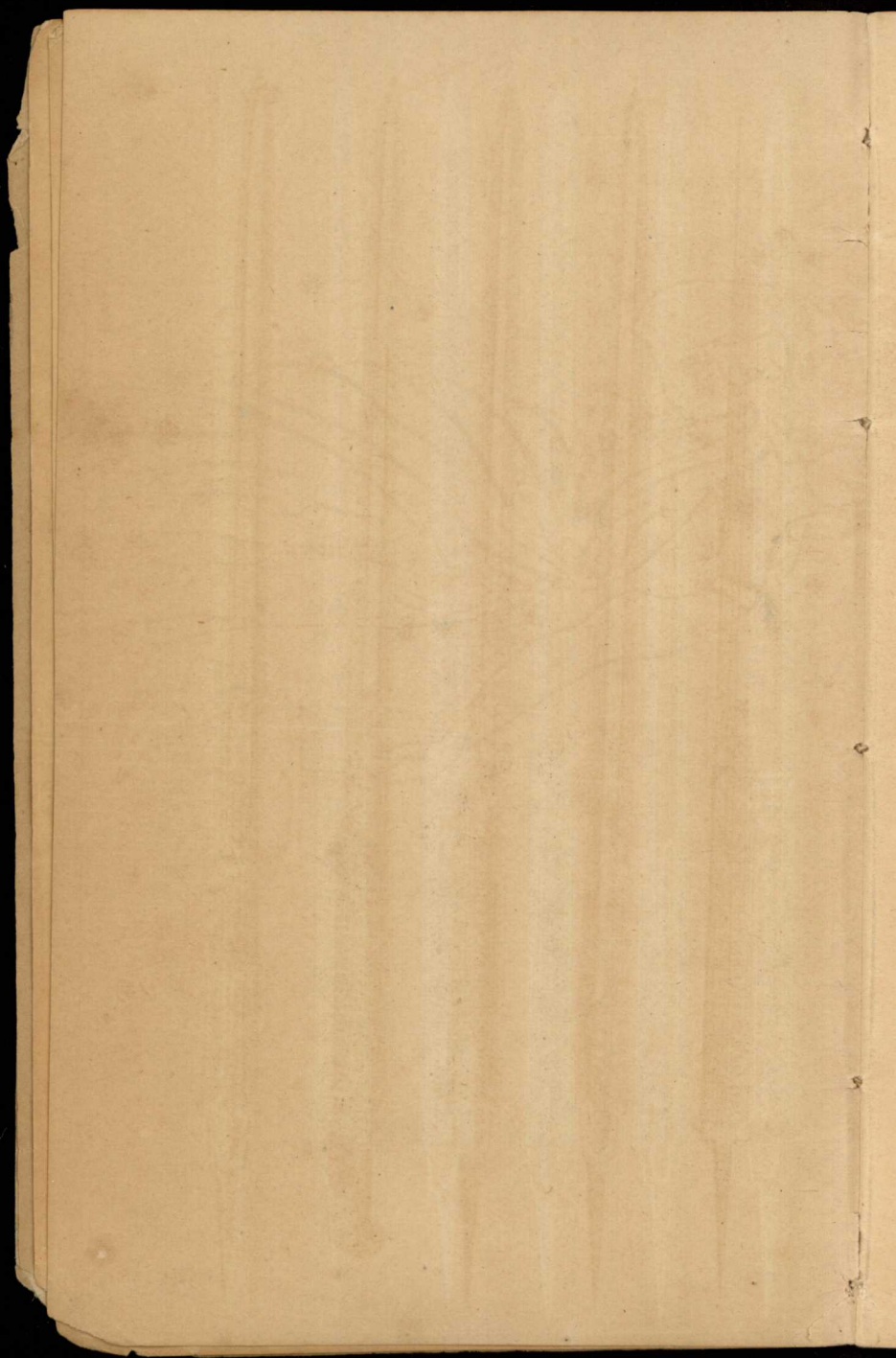


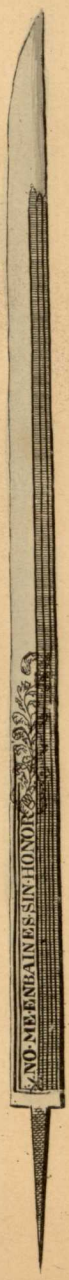


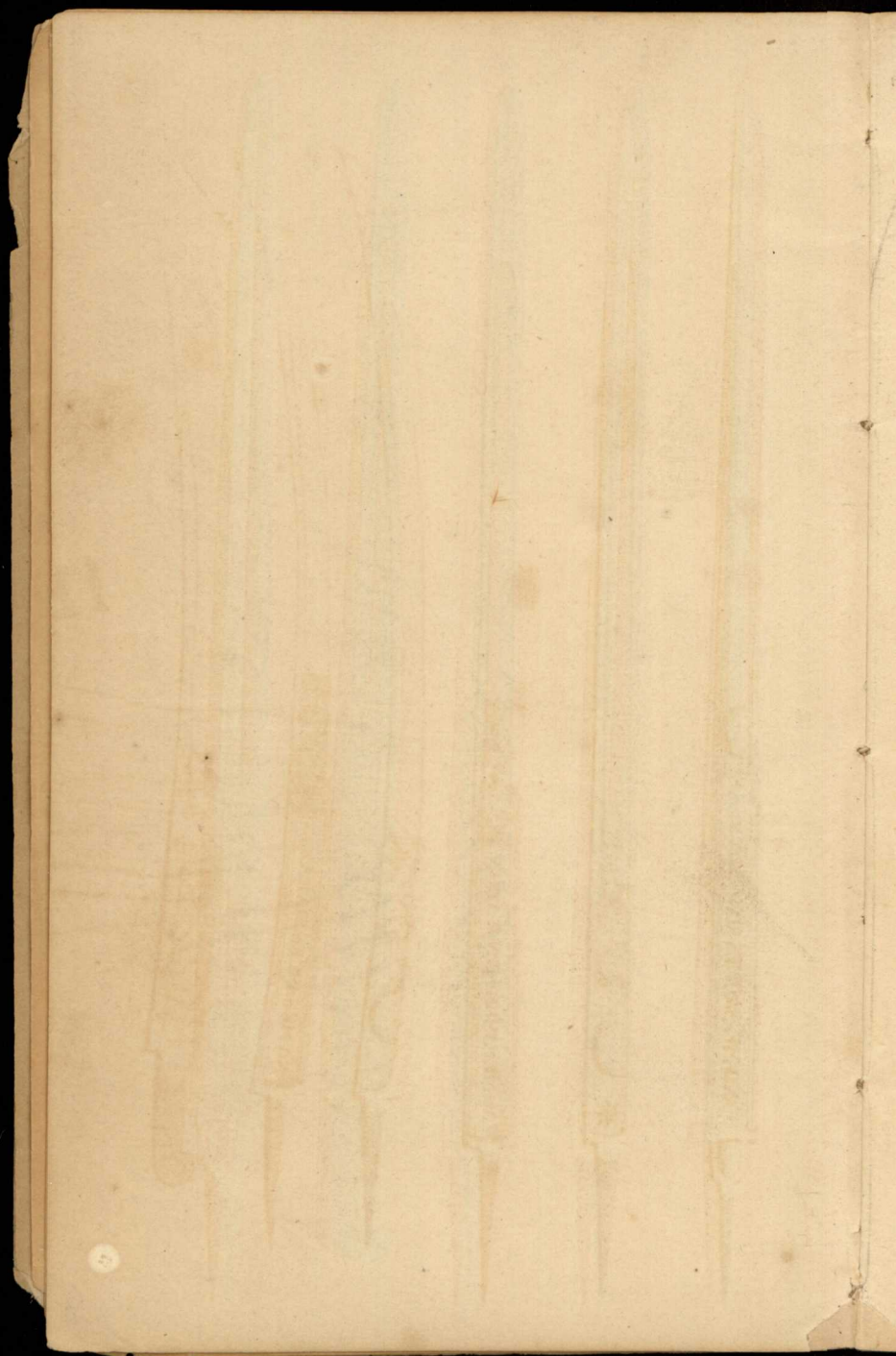


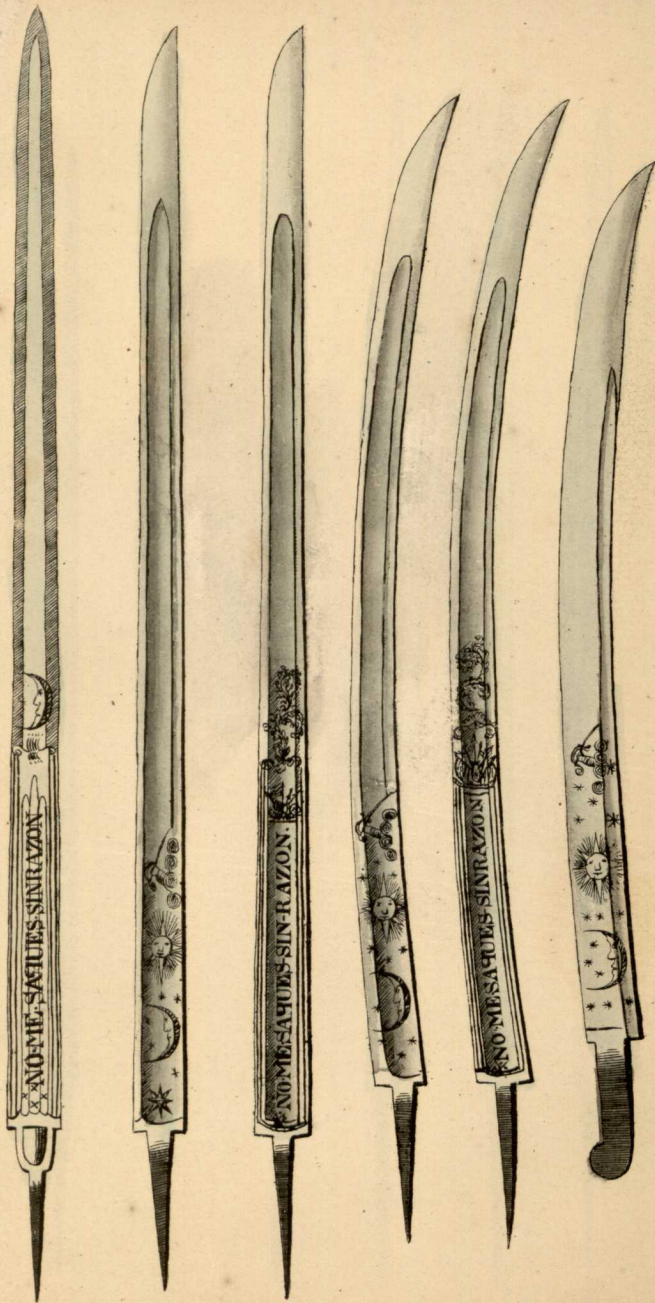


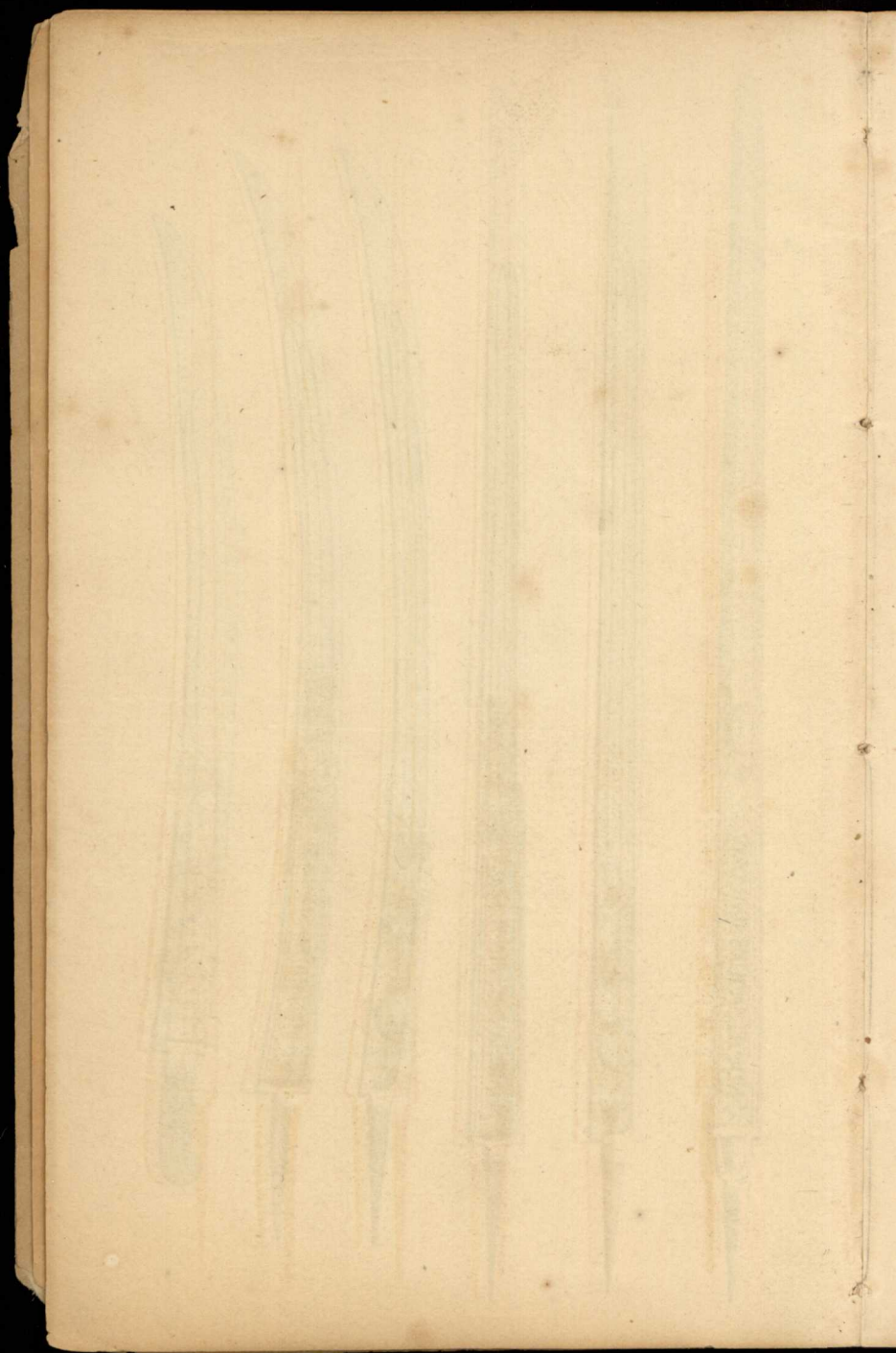




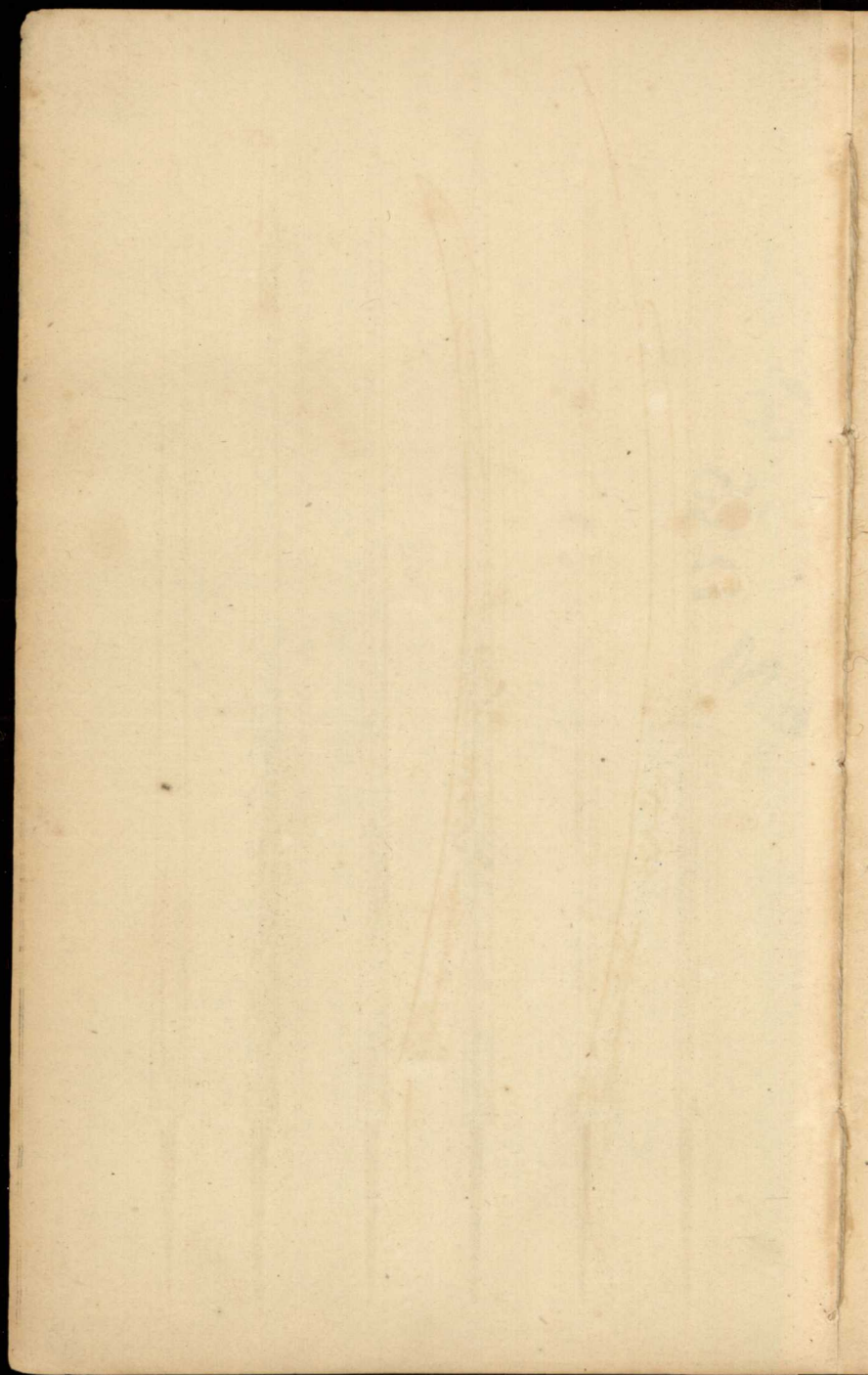


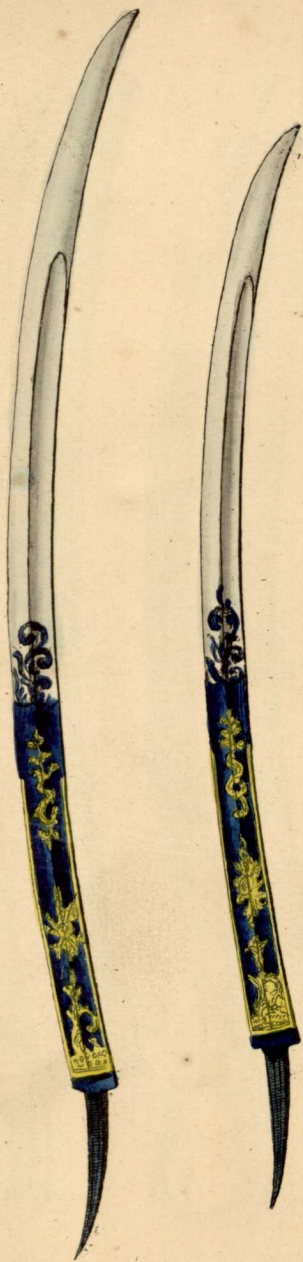


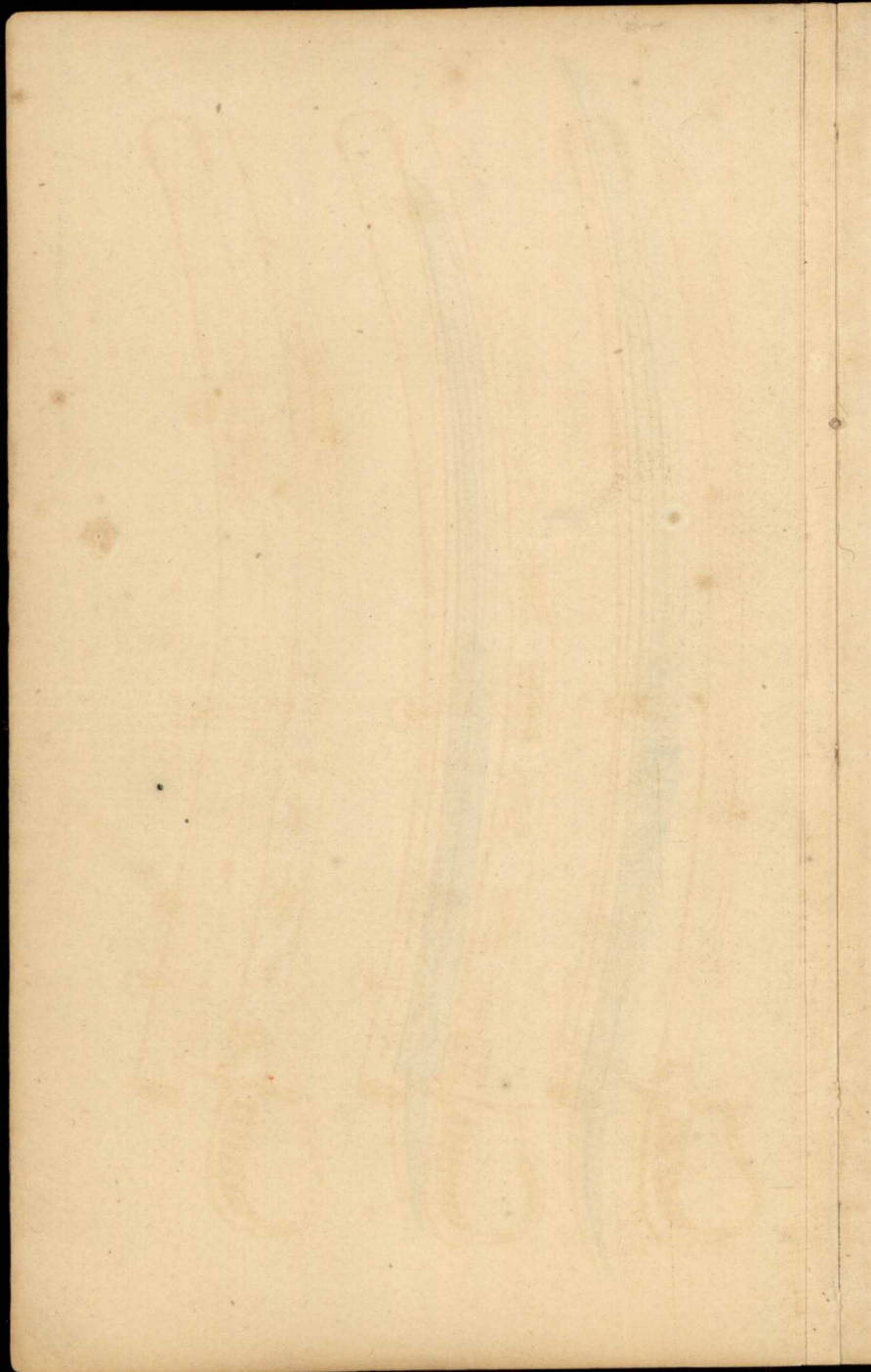


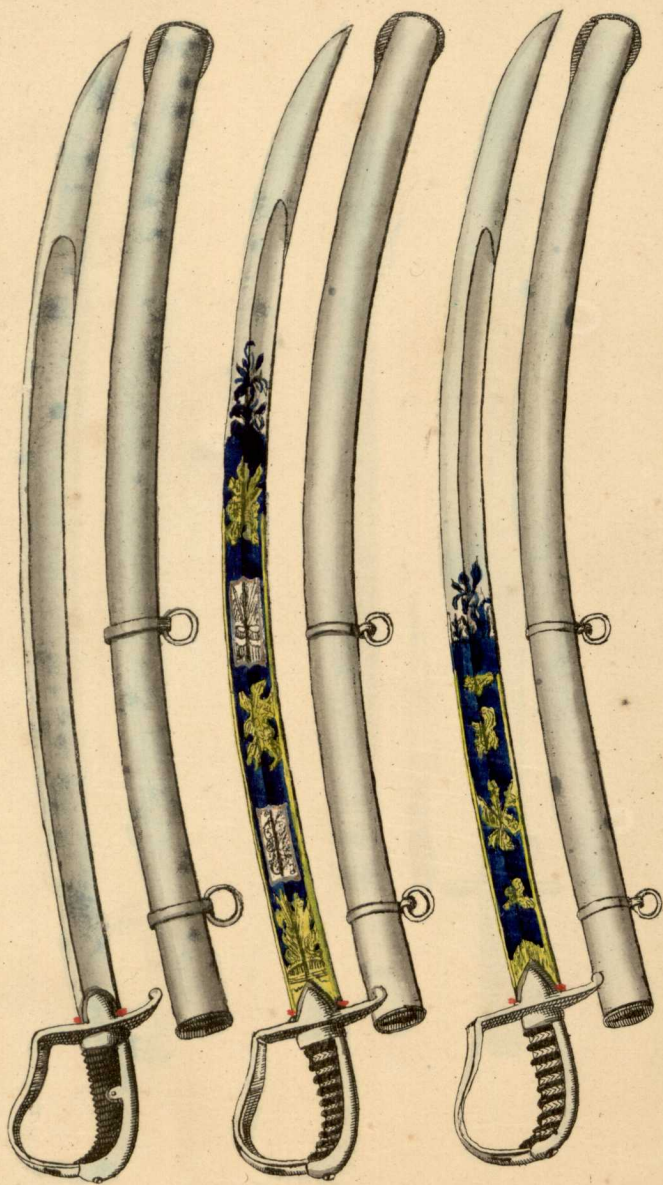




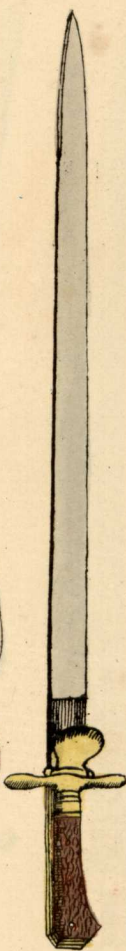
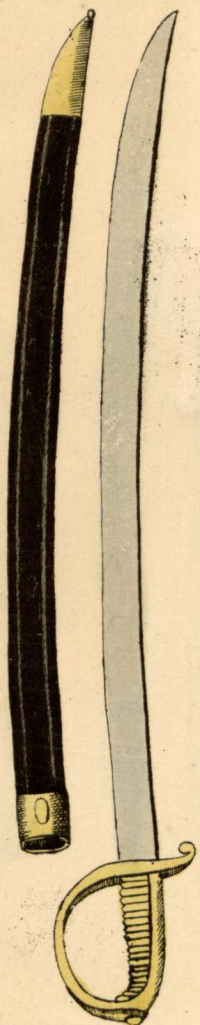




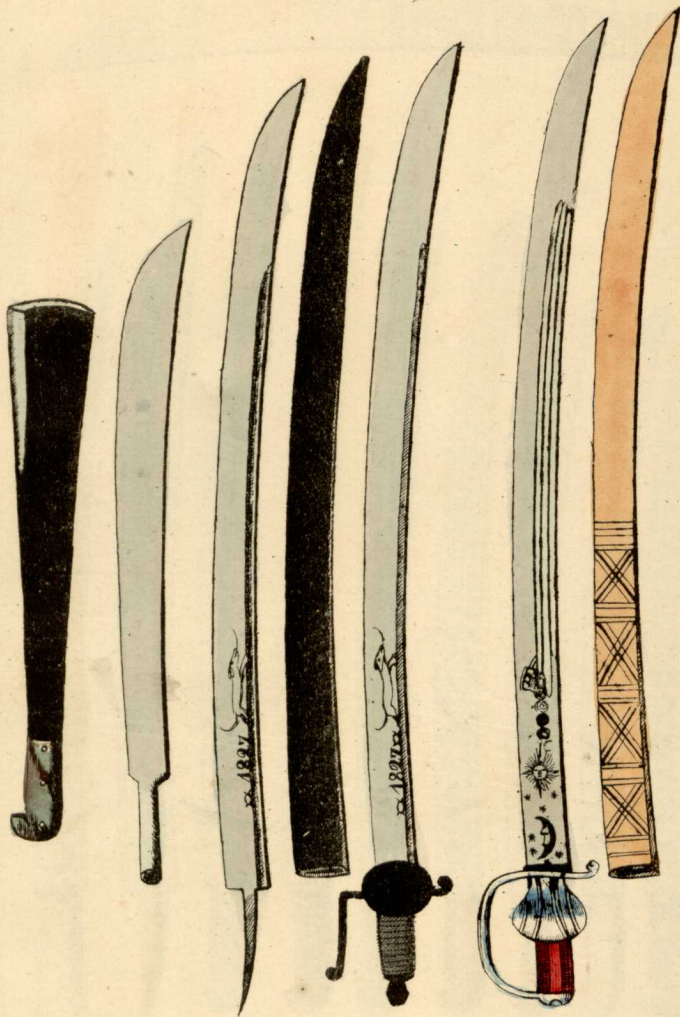




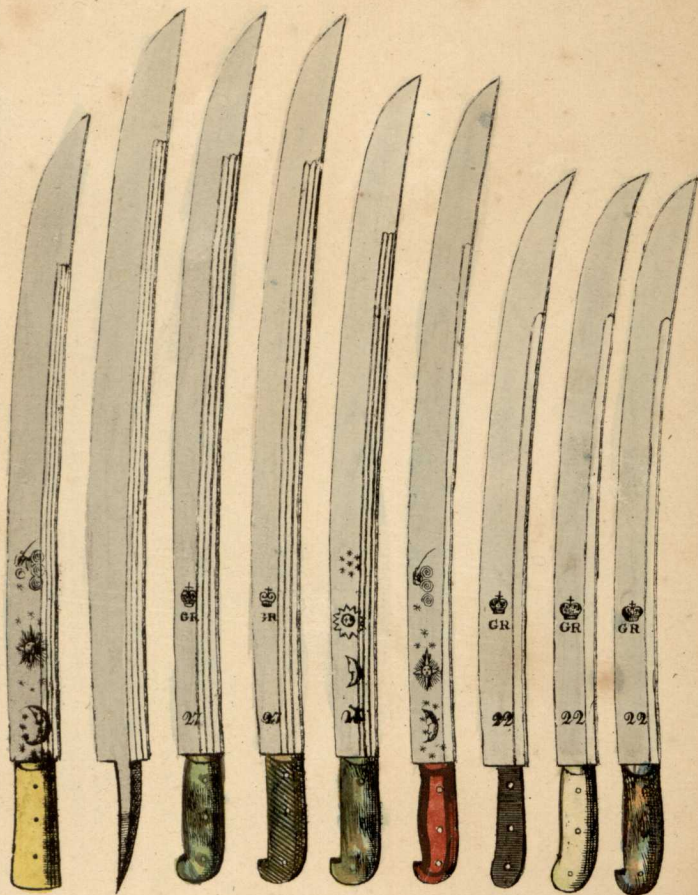


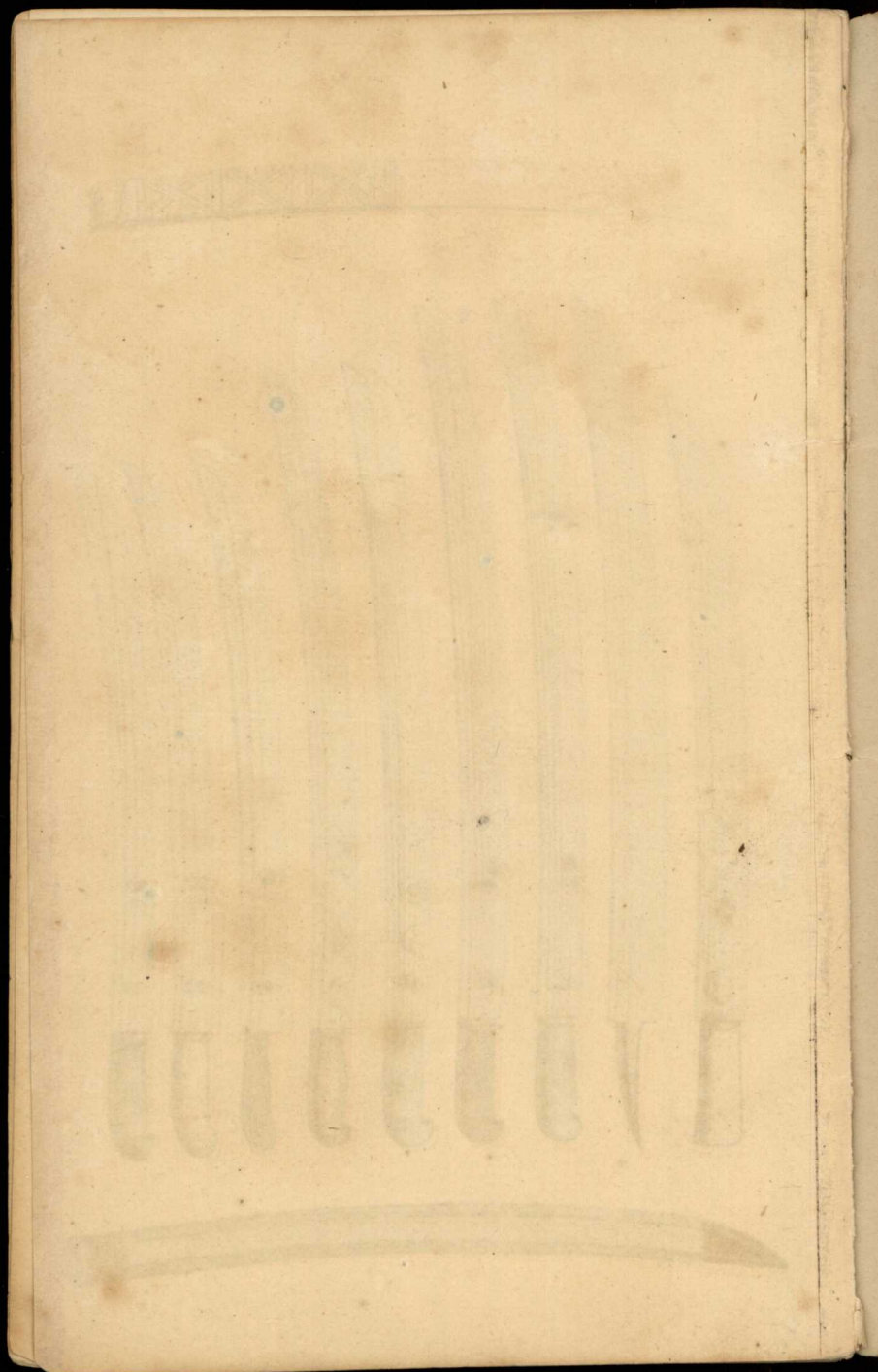


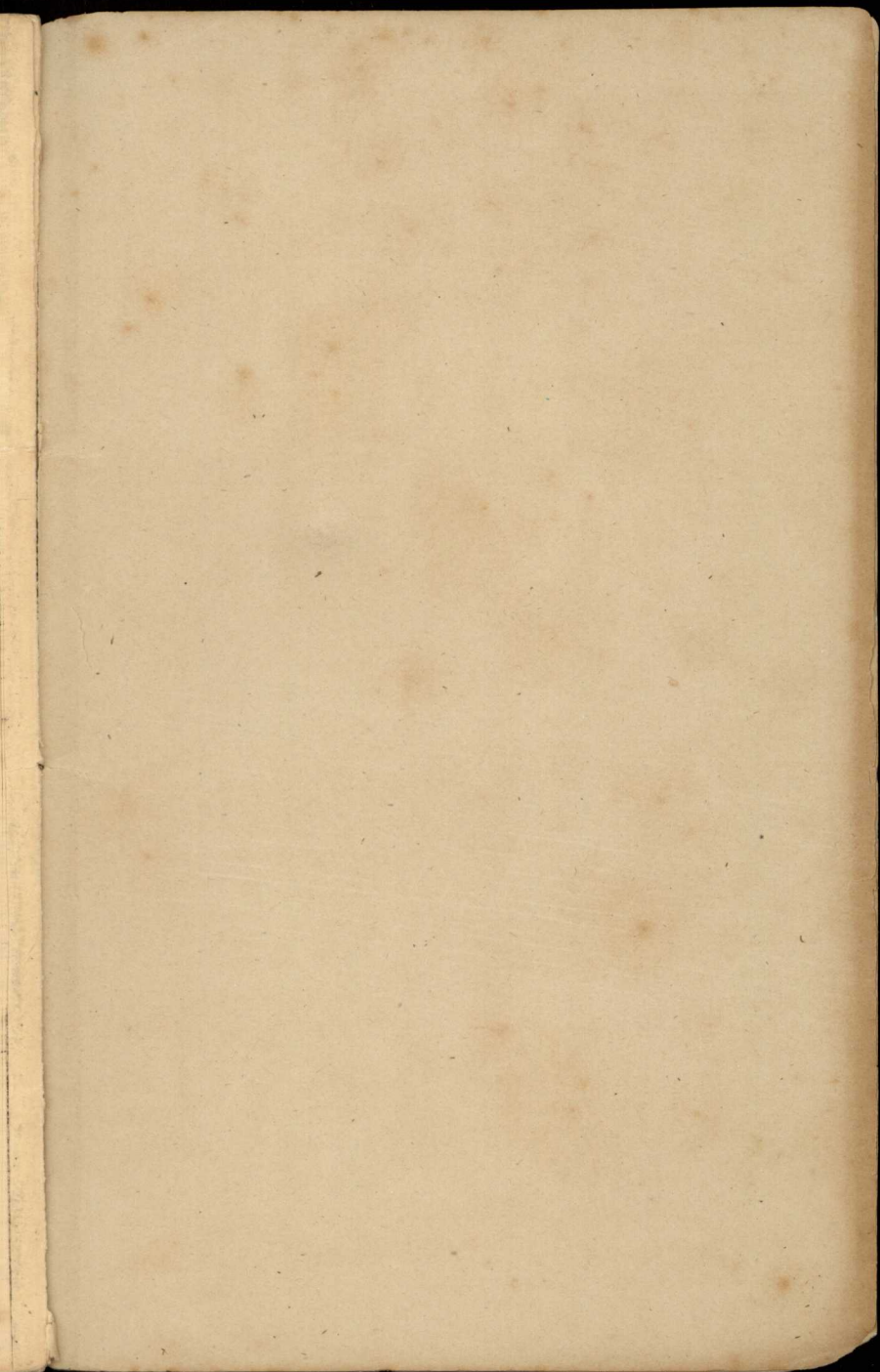


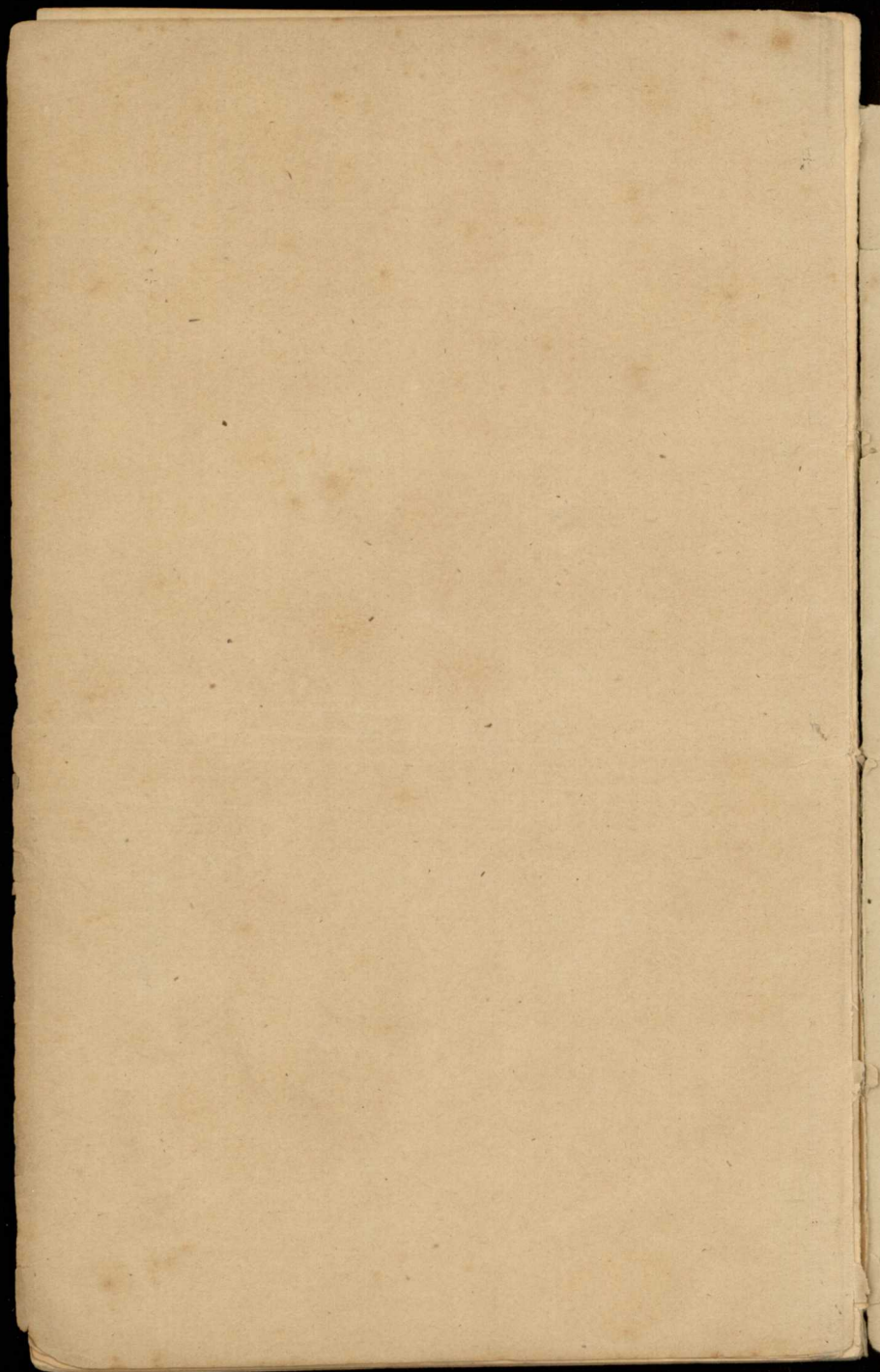


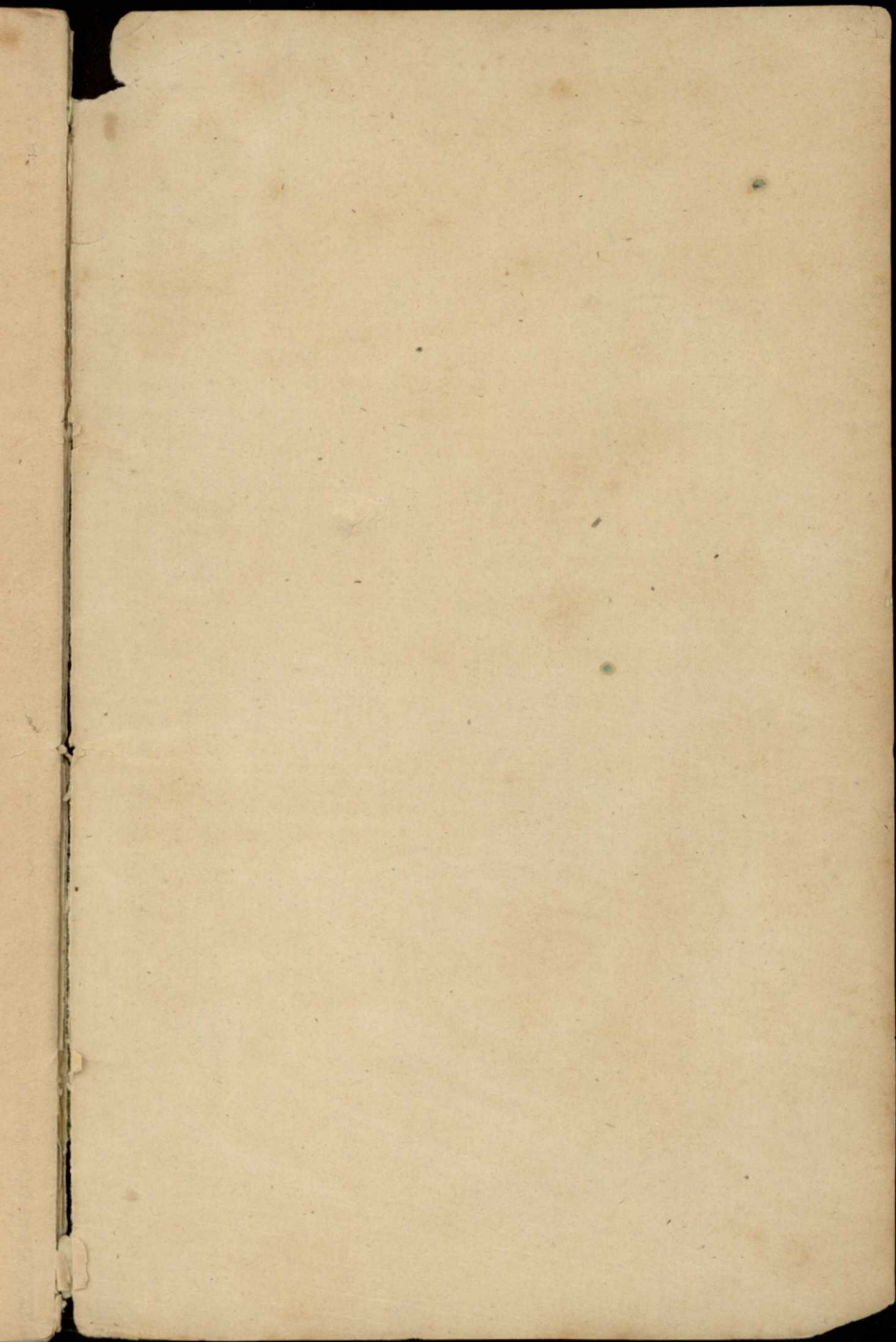






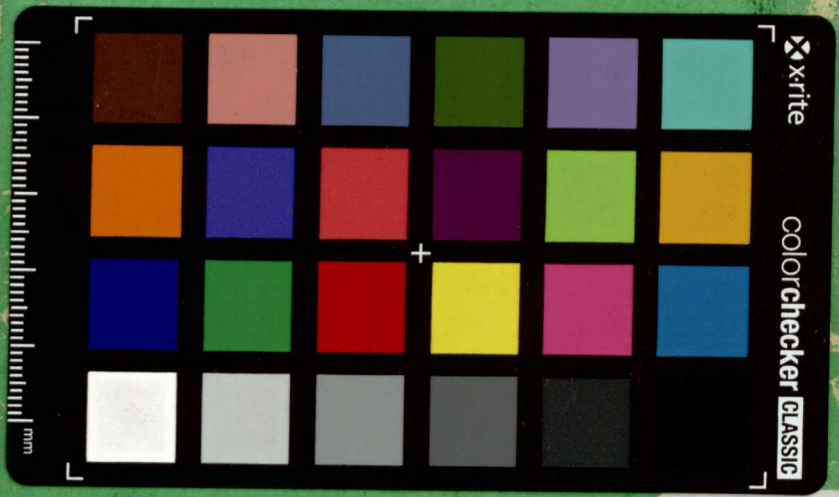






DEUTSCHES KL

M
4



DEUTSCHES KL

M
4